



OPTIFLOW

PTFE MEMBRANE FILTER CARTRIDGE

Hydrophobic PTFE ~ Normal temperature ~ Gas & Air
Pharmaceutical Grade

These filter cartridges are inherently hydrophobic PTFE membranes and thick thermal-resistant polypropylene core. They are characterized with non-metallic ion release, dead-free corner and easy to clean when compared to those with a stainless steel core.

As a result, they are highly recommended for the sterile filtration of gas, air in pharmaceutical, biological liquids and fermentation industries.

TYPICAL APPLICATIONS

- Aseptic Packaging, Compressed Air and Nitrogen Gas Sterilization, Corrosive Gases Sterilization, Vent Filtration...

FEATURES AND BENEFITS

- Absolute rated filter
- Inherently hydrophobic
- Exceptionally high flow rates with low pressure drops



QUALITY STANDARDS

- All materials used meet the requirements non fiber-releasing per Title 21 of the U.S. Code of Federal Regulations (CFR)
- Bacterial Endotoxin; Aqueous extraction of autoclaved filter contains <0.25 EU/mL as determined by Limulus Amebocyte Lysate (LAL), USP <85>-
- Component material were tested and meet the criteria for the USP class VI biological test for plastics
- Manufactured under a quality management system certified to ISO 9001:2008

TECHNICAL SPECIFICATIONS

CARTRIDGE DIMENSIONES

- Outer diameter: 68mm
- Length: 5"/127mm 10"/254mm 20"/508mm 30"/762mm
40"/1016mm

MATERIALS OF CONSTRUCTION

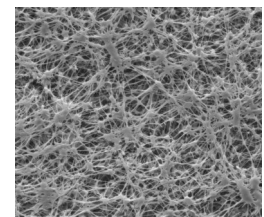
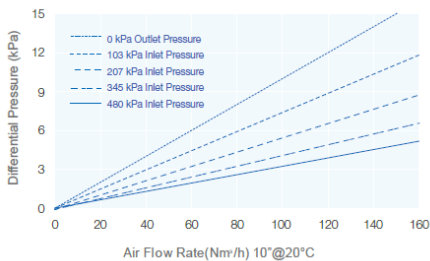
- Filter media: Hydrophobic Polytetrafluoroethylene (PTFE) membrane
- Support layer: Polypropylene
- Inner core: Polypropylene
- Cage: Polypropylene
- End caps: Polypropylene
- Internal adaptor/Reinforcing ring: PBT (Polybutylene terephthalate)

EFFECTIVE FILTRATION AREA

- 0.68m²/ 7.96ft² - Ø 68mm - 10" length

OPERATING CONDITIONS	
Max. operating temperature	80°C
Max. Differential pressure	6.9 bar at 25°C
	4.0 bar at 60°C
	2.4 bar at 80°C
Reverse	3.0 bar at 25°C
	1.0 bar at 80°C
Steam sterilization	30 min a 145°C (forward) <0.3 bar 100 cycles (reverse) <0.1 bar 50 cycles
Autoclave	400 cycles for 30 minutes at 130°C

Flow Rate Characteristics



QUALITY STANDARDS AND BIOLOGICAL SAFETY			
INTEGRITY TESTING	Diffusional Flow	Values are for cartridges wetted with 60%/40%, IPA/Water	<16 ml/min at 0.8bar (11.6psi)
	Water Intrusion		<0.38 ml/min
	Bubble Point		≥ 0.11 MPa
VALIDATION	Cartridges have been fully validated as sterilizing grade filter cartridges, for compressed air and gas applications. It passed the DOP test with VALAIR DATA II		

ORDERING INFORMATION

P	PTFN						
		LENGTH	MICRON	END CAP (inf)	END CAP (sup)	GASKETS	END CAP INSERT
		05 - 5"/125mm	0.01 - 0.01µm	B - DOE with Gaskets	B - DOE with Gaskets	S - Silicone	(Blank) - No insert
		10 - 10"/254mm	0.20 - 0.22µm	C - 226	F - Flat	E - EPDM	P - PBT
		20 - 20"/508mm		D - 222	S - Spear	V - Viton	S - St. St.
		30 - 30"/762mm		E - 222 Sartorius (3 tabs)			
		40 - 40"/1016mm		J - Junior 214			
				K - Junior 216			

DISTRIBUIDO POR:



Telf. 977 653135 – info@multifiltro.com

www.multifiltro.com

